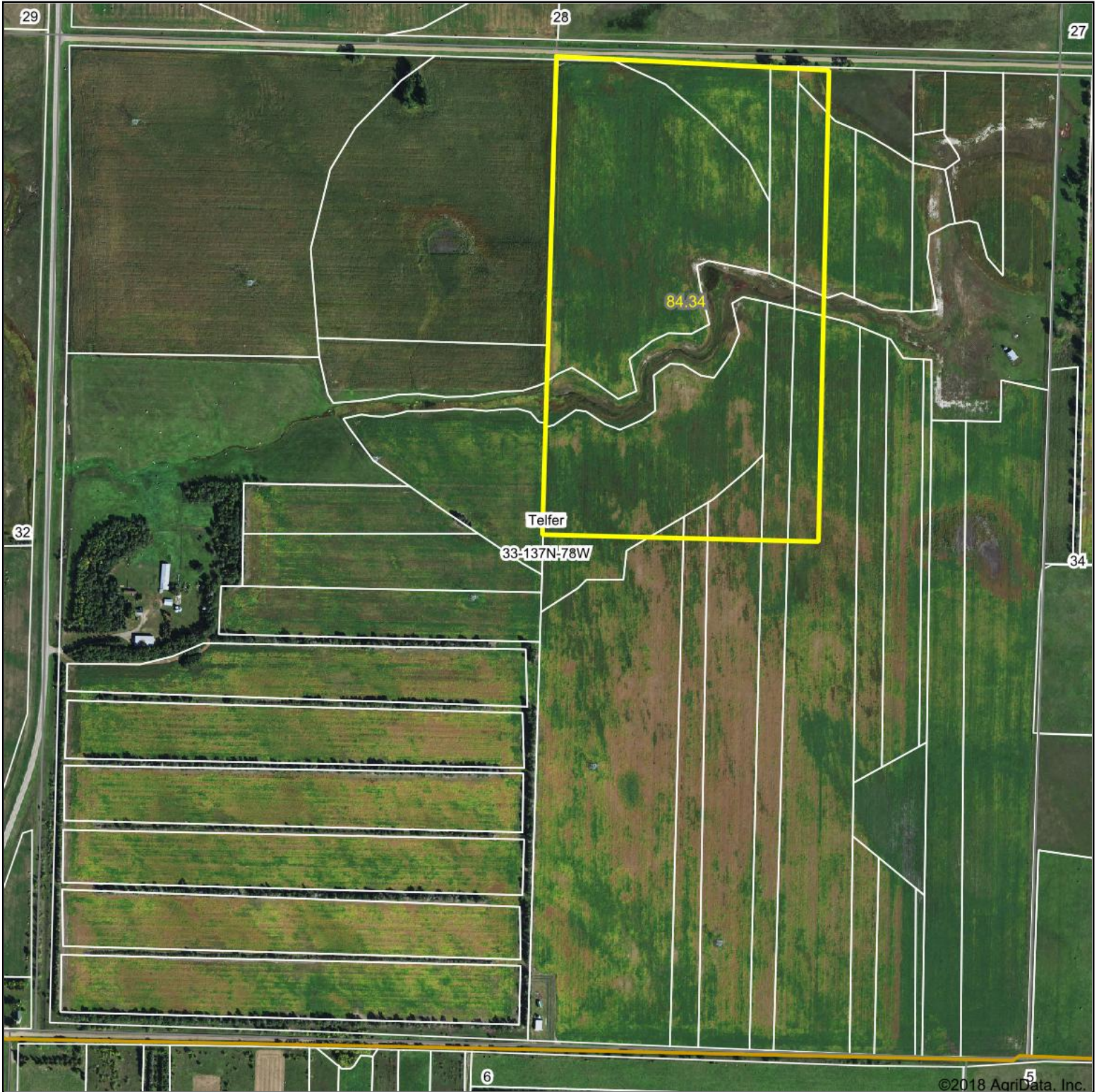


Aerial Map



BITZREALTY

Map Center: 46° 38' 31.14, -100° 31' 58.18

0ft 620ft 1240ft



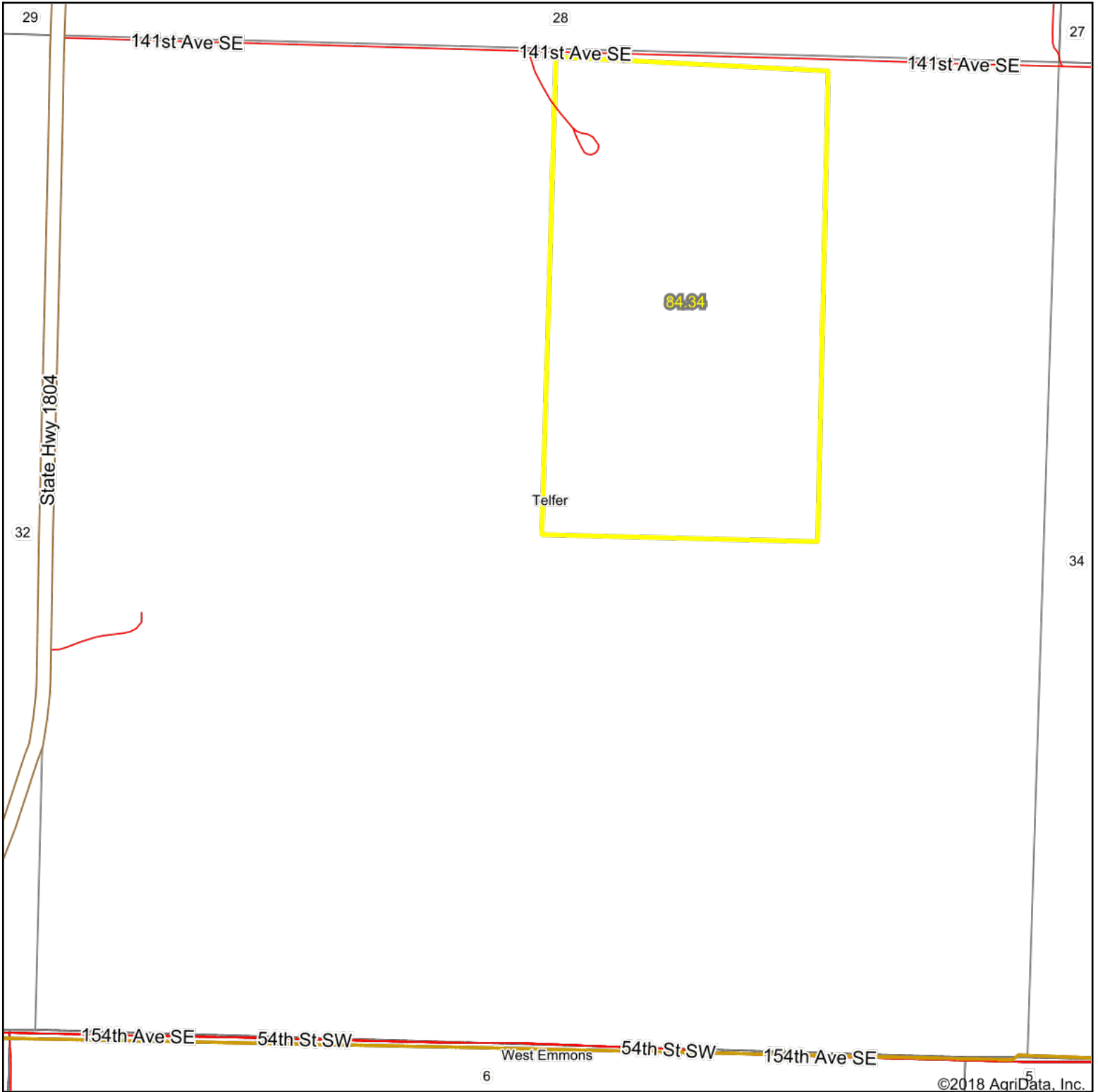
33-137N-78W
Burleigh County
North Dakota

Maps Provided By:
 **surety**
CUSTOMIZED ONLINE MAPPING
© AgriData, Inc. 2018 www.AgriDataInc.com



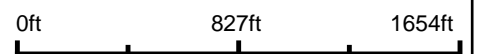
11/27/2018

OverView Map



BITZREALTY

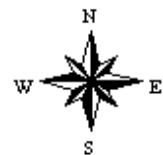
map center: 46° 38' 31.14, -100° 31' 58.18



Maps Provided By:

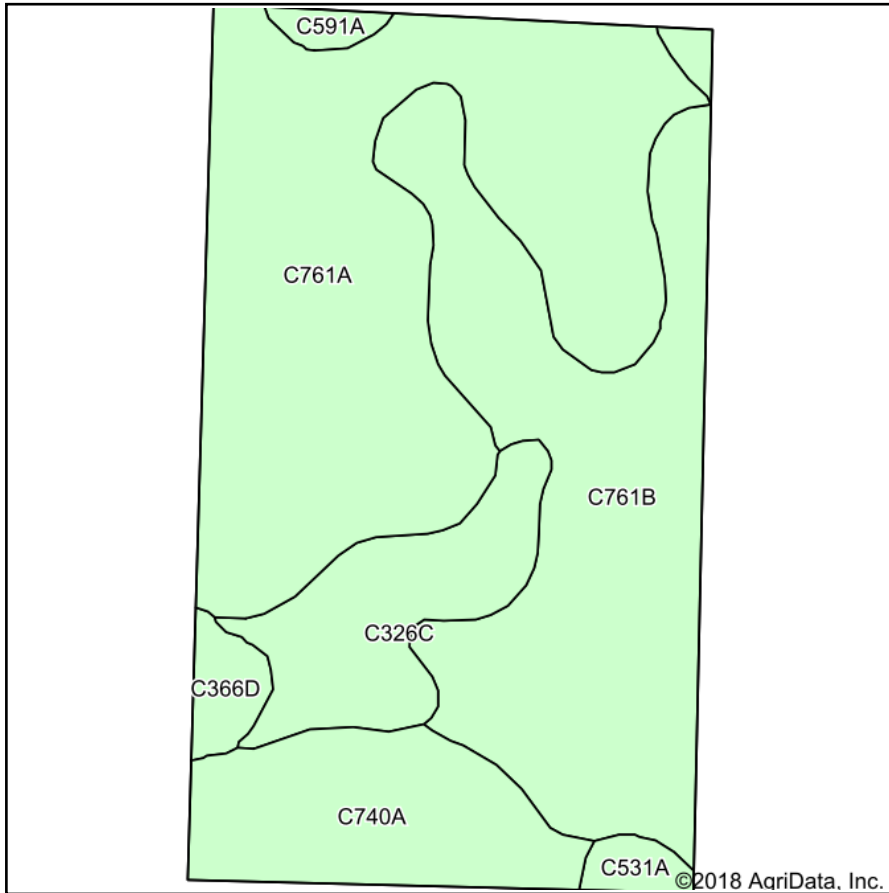


© AgriData, Inc. 2018 www.AgriDataInc.com



11/27/2018

Soils Map



Soils data provided by USDA and NRCS.



State: **North Dakota**
 County: **Burleigh**
 Location: **33-137N-78W**
 Township: **Telfer**
 Acres: **84.34**
 Date: **11/27/2018**

BITZREALTY

Maps Provided By:



Area Symbol: ND015, Soil Area Version: 19

Code	Soil Description	Acres	Percent of field	Non-Irr Class *c	Productivity Index	*n NCCPI Soybeans
C761A	Parshall-Lihen fine sandy loams, 0 to 2 percent slopes	35.78	42.4%	IIIe	65	33
C761B	Parshall-Lihen fine sandy loams, 2 to 6 percent slopes	26.63	31.6%	IIIe	61	32
C740A	Temvik silt loam, 0 to 3 percent slopes	9.89	11.7%	IIc	85	58
C326C	Lihen-Parshall-Telfer complex, 6 to 9 percent slopes	8.22	9.7%	IVe	41	20
C366D	Livona-Williams fine sandy loams, 9 to 15 percent slopes	1.63	1.9%	VIe	41	46
C591A	Rhoades-Daglum complex, 0 to 2 percent slopes	1.18	1.4%	VIIs	39	23
C531A	Arveson-Stirum loams, moderately saline, 0 to 2 percent slopes	1.01	1.2%	IIIs	33	15
Weighted Average					62.5	*n 34.2

*n: The aggregation method is "Weighted Average using major components"

*c: Using Capabilities Class Dominant Condition Aggregation Method

Soils data provided by USDA and NRCS.